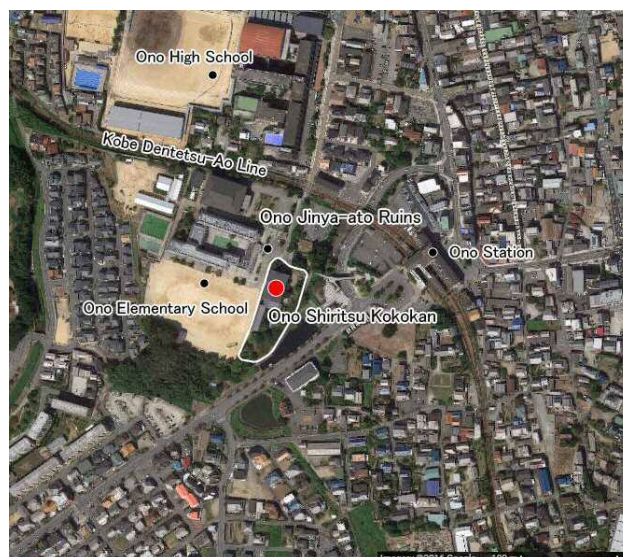


Ono Shiritsu Kokokan (Ono Town Hall) : Western-style auditorium built in the early Showa Period



Ono Shiritsu Kokokan

“Big Hinamatsuri” event
(Doll Festival)

Ono Shiritsu Kokokan stores and exhibits various materials relating to the city's history, geography, and culture. In the experiential-corner of the hall, visitors can play with toys from the olden days, and in the video corner, they are introduced to Ono City's history and culture through a video. The teahouse “Yanagi Futei” can be found inside the grounds. By experiencing traditional Japanese culture through the tea ceremony, visitors can get a taste of the Japanese aesthetic sense of Wabi-sabi (the beauty of quiet simplicity and subdued refinement).

While the interior has been modified, the exterior appropriates Ono Elementary School auditorium. Built in 1936, the auditorium has a steel frame, and the roof is gabled with slate tiles. The exterior incorporates western-style architecture, such as the windows which are circular at the top and vestibule ornamentation imitating pillars. It is an important local scenic resource that has been designated an important building for the formation of beautiful townscapes (2006).

Source: Hyogo Prefecture website, Ono City website

Main sights which make up the hometown of Hyogo <input type="checkbox"/> Rich natural landscape <input type="checkbox"/> Rural vistas rich in nature and greenery <input checked="" type="checkbox"/> Expressive urban vistas and historic sights handed down through generations <input type="checkbox"/> Cultural sights particular to the area	Location	477 Nishihonmachi, Ono City
	Famous sights	
	Festivals and events	
	Associated parties	
	Organizations	
	Related sights	Ono-han Jinya-ato (remains of Ono clan regional government office)

Jodo-ji Temple

: The national treasure Jodo-do Hall (The Pure Land Hall) and seasonal flowers



Jodo-do Hall of Jodo-ji Temple



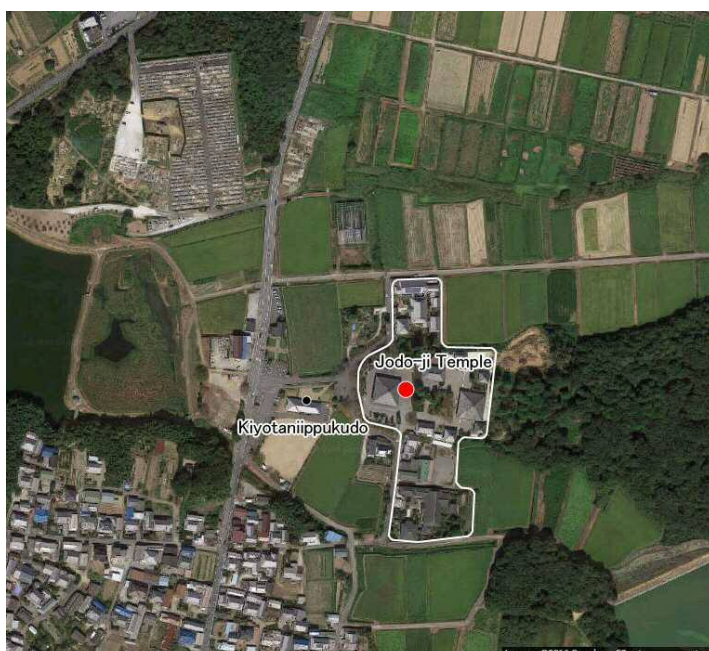
Main Hall of Hachiman-jinja Shrine



Hydrangeas in the mountain behind Jodo-ji Temple



“National treasure and cherry blossoms”
Photo contributed by: Masao Kawai
(“Hometown Kitaharima That I Want To Preserve Photo Contest” prize-winning photo)



The Jodo-do Hall (The Pure Land Hall) of Jodo-ji Temple was built during the Kamakura Period during 1192-1197 using a Buddhist architectural style called Daibutsu-yo (also called Tenjiku-yo or “Indian style”) that Chogen Shonin (Saint Chogen) employed in the reconstruction of Nara’s Todai-ji Temple. It is a precious building designated a national treasure. Within Jodo-do Hall are the Standing Statues of Amida Triad (designated a national treasure) by Kaikei, a renowned sculptor of Buddhist statues.

In the spring, the cherry blossoms are in full bloom within the temple precincts, which together with Jodo-do Hall, create an elegant atmosphere. Approx. 10,000 hydrangeas grow in the mountain behind the temple, a forest path has been established for pilgrims on the Shikoku Pilgrimage (88 temples of Shikoku), and one can also explore 88 Jizo stone statues that were made in the Edo Period (Bodhisattva who looks over children, travelers and the underworld).

Source: Ono City website

Main sights which make up the hometown of Hyogo <input checked="" type="checkbox"/> Rich natural landscape <input type="checkbox"/> Rural vistas rich in nature and greenery <input type="checkbox"/> Expressive urban vistas and historic sights handed down through generations <input checked="" type="checkbox"/> Cultural sights particular to the area	Location	2094 Kiyotanicho, Ono City
	Famous sights	
	Festivals and events	
	Associated parties	
	Organizations	
	Related sights	

Himawari-no-Oka Koen (Sunflower Hill Park) : An idyllic rural landscape and seasonal flowers



Sunflower Tower



Hana-no-komichi (Flower Lane)



Cosmos field



Sunflower field



Wanpaku Playground



This park opened on April 21, 2002 as a place where one can rest leisurely within a natural environment all day long, irrespective of your age. Approx. 8ha of hilly ground along Japan National Route 175 has been prepared for the park which receives approx. 700,000 visitors annually.

An idyllic rural landscape and the setting sun can be viewed from the Sunflower Tower which is the park's symbol. In the farmland in front of the park, approx. 340,000 sunflowers (the municipal flower) bloom in the summer, while cosmos flowers carpet the fields in the fall. The Flower Lane is lined with seasonal flower beds and the large-scale grass field is a multipurpose field for playing soccer and for recreation. The Wanpaku Playground is outfitted with large playground equipment.

Source: Ono City website, Ono City Tourism Association website, Hato-ni-Gutto Kitaharima website

Main sights which make up the hometown of Hyogo <input type="checkbox"/> Rich natural landscape <input type="checkbox"/> Rural vistas rich in nature and greenery <input type="checkbox"/> Expressive urban vistas and historic sights handed down through generations <input type="checkbox"/> Cultural sights particular to the area	Location	1545-321 Kiyotanicho, Ono City
	Famous sights	Top 100 Townscapes in Hyogo That I Like (Hyogo Prefecture)
	Festivals and events	
	Associated parties	
	Organizations	Ono Gardening Volunteers, NPO Hyogo Green Staffs
	Related sights	

Ono Alps

: Mt. Beniyama, Mt. Ono Fuji, and nature-rich satoyama-rin (community-based forest)



Rocky stretch on the way to Mt. Beniyama



Walking route during the autumn colors



Overlooking Ono City from Mt. Beniyama



Mt. Ono Fuji seen from Mt. Beniyama



Looking far to the west from JR Onomachi Station, one can see Ono Alps at a distance between the homes interspersed by a verdant mountain range. They are the peaks of the Beniyama mountain range popularly known as Ono Alps. Ono Alps which spans approx. 14.7 km in an east-west direction and sandwiches what is commonly known as Mt. Ono Fuji (Mt. Soyama, 198.9m) was named by local hiking enthusiasts. It is popular among mountain climbers during the cherry blossom and the autumn leaves seasons.

The view from Mt. Ono Fuji which is the highest peak of Ono Alps, includes precipitous rock cliffs and the calm flow of Kakogawa River and its branch streams, and on a sunny day one can see a natural panorama which includes Akashi-Kaikyo Ohashi Bridge and Awaji Island. Ono Alps extends from Fukudencho, Ono City to “Hakuundani Onsen Yupikama,” and you can enjoy several hiking courses such as “Beniyama Tozan Course,” “Intermediate Course,” and “East Course.” These trails which are accessible even by beginners and families will afford more thrills than you bargain for.

The satoyama-rin (community-based forest) “Kisumi-no-Miharashi-no-Mori” outfitted by the “Hyogo Bountiful Forest Building Scheme” can be found in the vicinity. Kisumi-no-Miharashi-no-Mori has three hiking trails that will allow you to fully enjoy the ever-changing natural scenery. In the spring, resplendent azaleas bloom on the forest trail along the mountain ridge.

Source: Top 100 Landscapes in Hyogo (Hyogo Prefecture), Ono City website, Hato-ni-Gutto Kitaharima website

Main sights which make up the hometown of Hyogo <input checked="" type="checkbox"/> Rich natural landscape <input type="checkbox"/> Rural vistas rich in nature and greenery <input type="checkbox"/> Expressive urban vistas and historic sights handed down through generations <input type="checkbox"/> Cultural sights particular to the area	Location	Kishicho, Ono City
	Famous sights	100 Landscapes in Hyogo (Hyogo Prefecture) 100 New Accounts of Hiking Trails in Japan (Furusato-no-Michi)
	Festivals and events	
	Associated parties	
	Organizations	
	Related sights	Kisumi-no-Miharashi-no-Mori, Pond Oike (Kamoike), Pond Meike