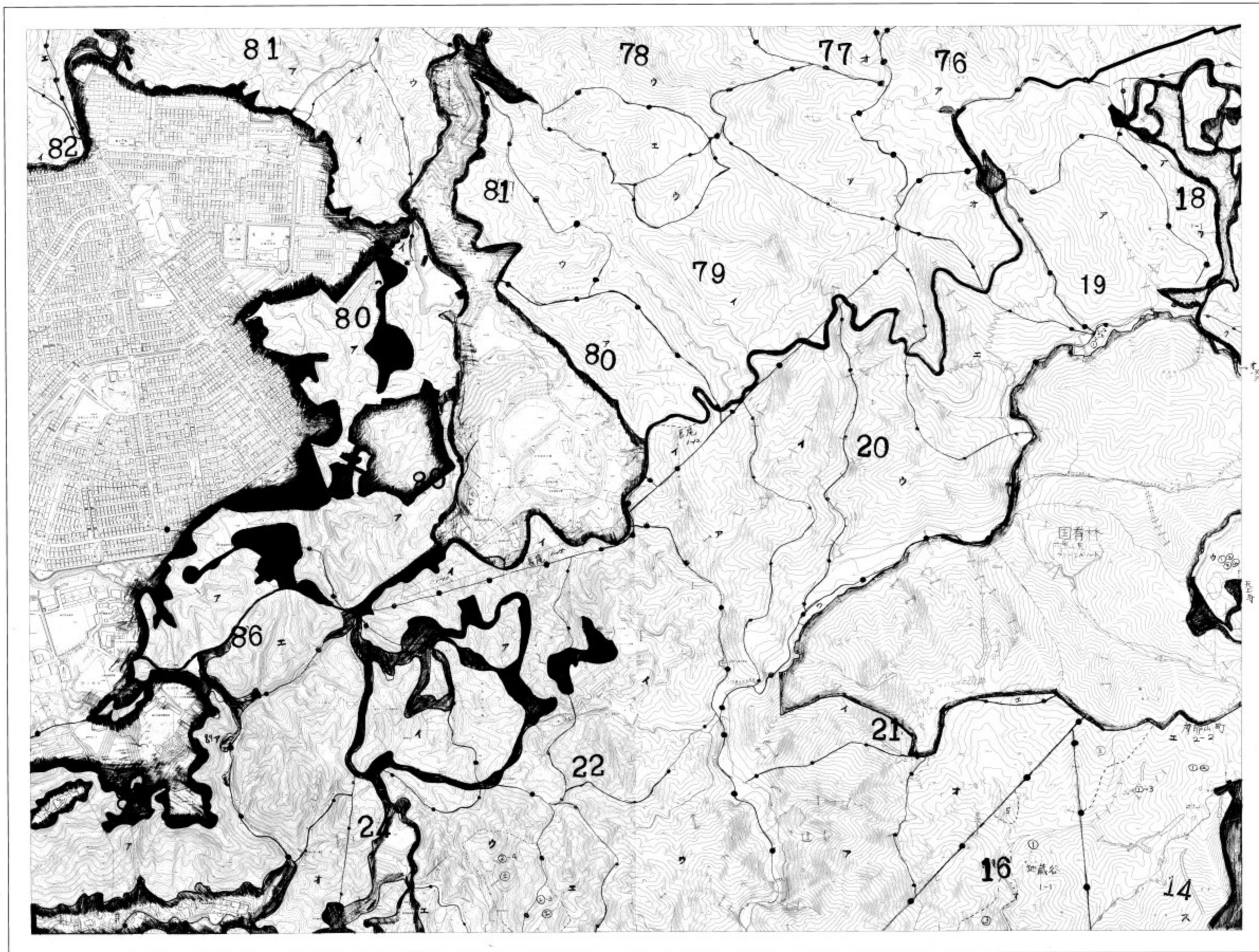


神戸市森林(基本・施業)図 58-33



23	24	25
32	33	34
41	42	43

記号

The legend defines various symbols used on the map, including different types of roads, rivers, and forest boundaries. It includes a grid of symbols and their corresponding map features, such as contour lines, spot heights, and specific forest management symbols.

縮尺: 1:5,000  
 測尺: 1000m

1:5,000

発行: 昭和48年11月  
 印刷: 昭和48年11月  
 (株) 国土院

兵庫県  
 神戸市  
 東灘区